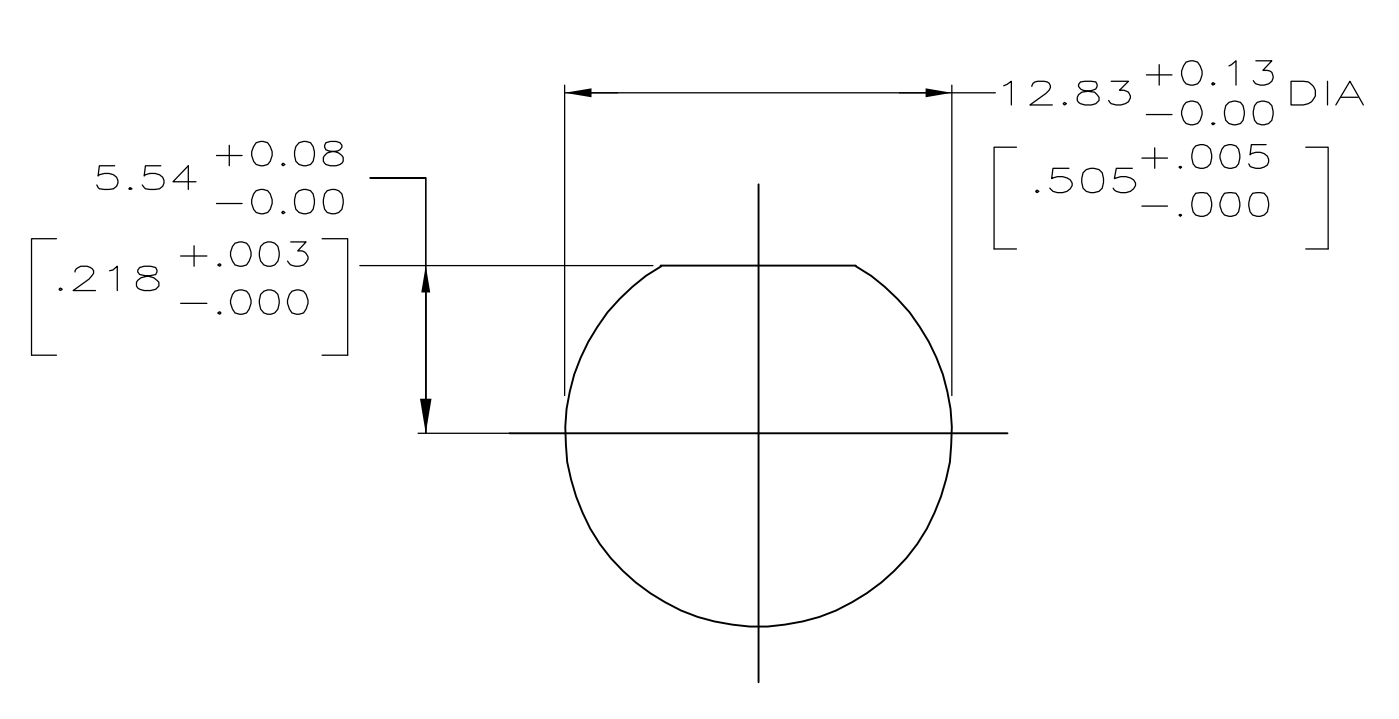
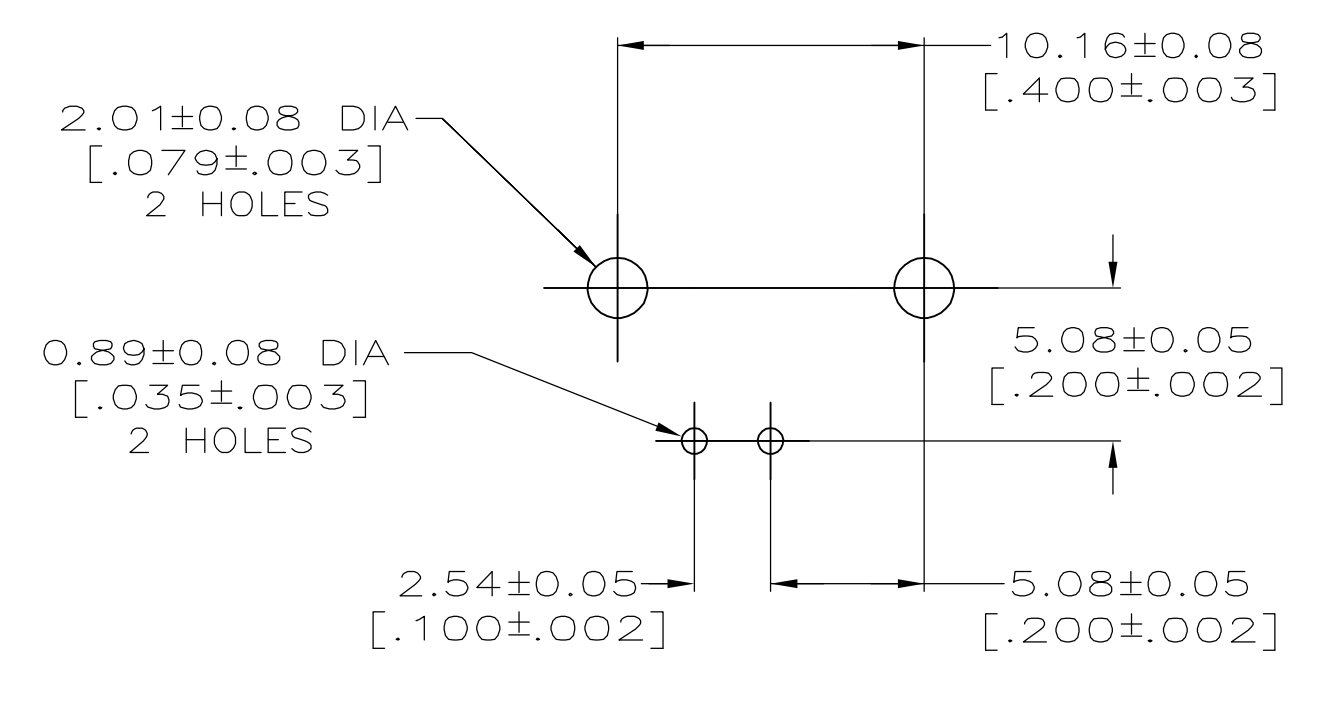


- 1 ZINC PER QQ-Z-363.
- 2 POLYMETHYLPENTENE, GENERAL PURPOSE.
- 3 BERYLLIUM COPPER PER QQ-C-530.
- 4 BRASS PER ASTM-B-453.
- 5 BRASS PER ASTM-B-16.
- 6 NICKEL PLATE PER QQ-N-290, 3.81 μm [.000150] MINIMUM THICK.
- 7 TIN PLATE PER ASTM-B-545, 3.81 μm [.000150] MINIMUM THICK.
- 8 GOLD PLATE PER ASTM-B-488, 0.76 μm [.000030] MINIMUM THICK.
- 9. SEE INSTRUCTION SHEET 408-2769.



RECOMMENDED PANEL CUTOUT



PCB CONFIGURATION

2.03 ± 0.13 [.080 ± 0.005]	2.29 ± 0.13 [.090 ± 0.005]	5414907-3
2.03 ± 0.13 [.080 ± 0.005]	2.79 ± 0.25 [.110 ± 0.010]	5414907-2
3.48 ± 0.25 [.137 ± 0.010]	4.11 ± 0.43 [.162 ± 0.017]	5414907-1
B	A	PART NUMBER

THIS DRAWING IS A CONTROLLED DOCUMENT.		DWN J. ALCORTA - 26APR2005	Tyco Electronics Corporation Harrisburg, PA 17105-3608	
DIMENSIONS: mm [INCHES]		CHK J. HAVENER - 26APR2005	NAME J. LIPPERT - 26APR2005	
TOLERANCES UNLESS OTHERWISE SPECIFIED:		PRODUCT SPEC		
0 PLC	± -	APPLICATION SPEC		
1 PLC	± -	SIZE		
2 PLC	± 0.20 [.008]	CAGE CODE		
3 PLC	± -	DRAWING NO		
4 PLC	± -	RESTRICTED TO		
ANGLES	± -	WEIGHT		
FINISH	SEE NOTES 6 - 8	A1 00779 ©=5414907		
MATERIAL SEE NOTES 1 - 5		CUSTOMER DRAWING		
		SCALE	SHEET	REV
		5:1	1 OF 1	A